

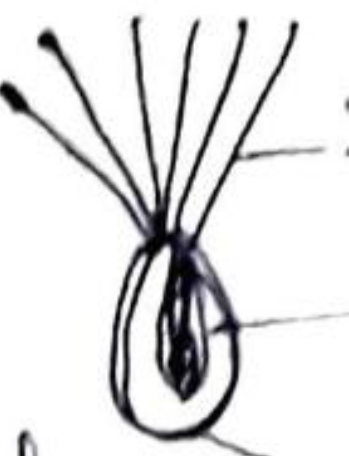
# Indehiscent fruits (आवकाश)

Dry  
खुरदरा

Fleshy  
सूख

## Dry Indehiscent fruits

1. Cypsella :- Carpel-2; ovary chamber-1; inferior ovary, ovary wall and seed coat (testa) separate.  
Seed - 1, eg. Sonchus member of Asteraceae
2. Caryopsis/grains :- Carpel-2, ovary chamber-1  
inferior ovary; ovary superior  
Seed - 1, ovary wall (pericarp) and seed coat (testa) fused.  
eg Oryza sativa, Zea mays
3. Achene :- Carpel-1, ovary chamber-1  
superior or inferior ovary, seed - 1, pericarp & testa not fused. eg. Nigella sativa (Black cummin, अमिठी अणु)
4. Utricle :- Carpel-1, ovary chamber-1  
superior ovary, seeds many.  
eg Basella rubra (सूखे अणु)
5. Nut :- Carpel-2 or more, ovary chamber  
superior ovary, pericarp (fruit)





# Indehiscent fruits

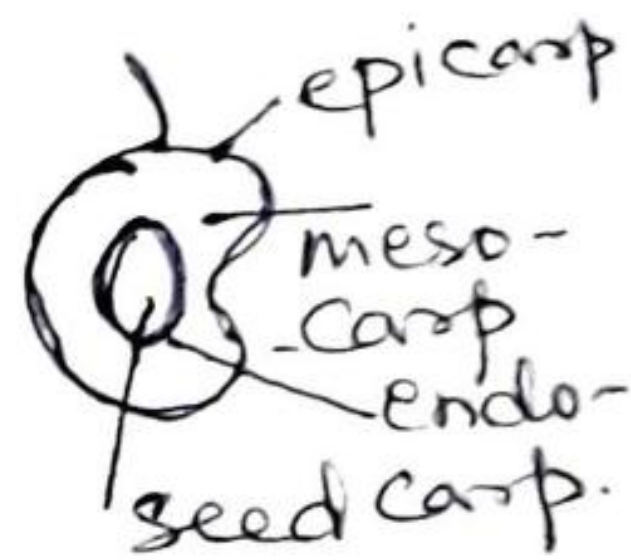
अनिहात

Dry  
खस

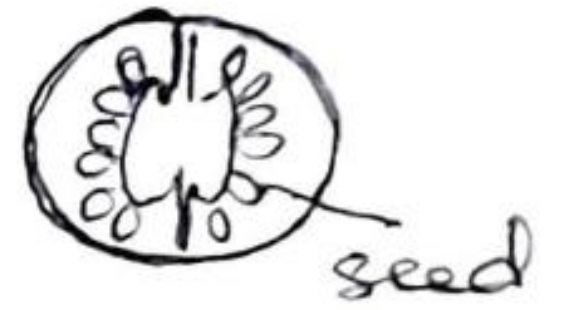
Fleshy  
सस

## Fleshy fruits

1. Drupe:- The fruit wall i.e. the pericarp is divided into epicarp (outer), mesocarp (middle) and endocarp (inner). Mesocarp is fleshy.  
eg. Mangifera indica



2. Berry:- Carpel 1-many, many seeded fleshy mesocarp, epicarp thin.  
eg. Solanum lycopersicum  
tomato



3. Pepo:- Like berry but develops from inferior ovary. eg. Cucumis sativus  
(cucumber)



4. Pome Hesperidium:- Carpel-2-more, superior ovary, thalamus becomes fleshy instead of ovary wall. eg. Malus domestica (apple)



5. Hesperidium:- Carpel many, superior ovary, tough skin, <sup>(epicarp & mesocarp)</sup> divided endocarp divided into segments. eg. Citrus reticulata (orange)

