

OUTCROP PATTERNS OF HOMOCLINAL BEDS ON UNEVEN TOPOGRAPHY

Problems *OPH 1/11 – OPH 6/11*

In each figure, the solid lines represent outcrops of litho boundaries, and the broken lines are the contour lines (values given in metres). The scale is 1: 10000. Answer the following questions for each figure.

1. Describe the topography of the area.
2. Describe the outcrop pattern systematically as follows
 - 2.1. State whether the rock units A, B and C should be included in a same rock group or different rock groups.
 - 2.2. State whether the outcrop pattern is straight, parallel or V-shaped
 - 2.3. If the outcrop pattern is V-shaped,
 - 2.3.1. State whether outcrop V's coincide **everywhere** with contour V's or not
 - 2.3.2. State whether outcrop V's close upstream or downstream
 - 2.3.3. If the outcrop V's close upstream, state whether they are wider or narrower than contour V's
3. Determine the attitude of the sequence.
4. State the succession of litho units in the area.
5. Draw appropriate vertical section(s) of the area

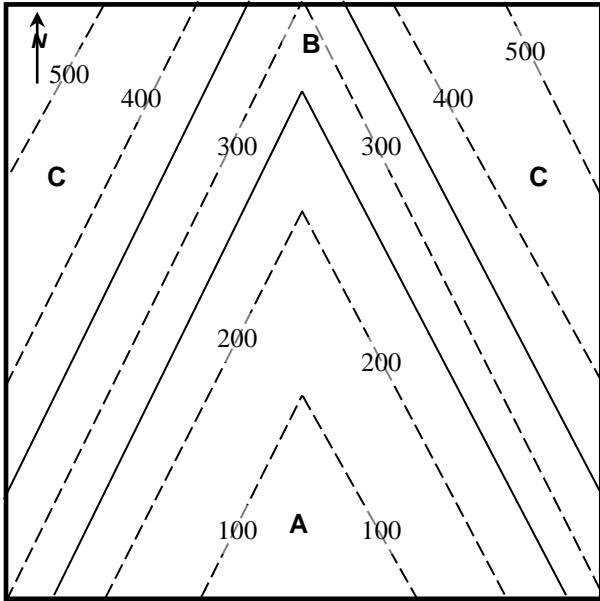


Figure: *OPH 1/11*

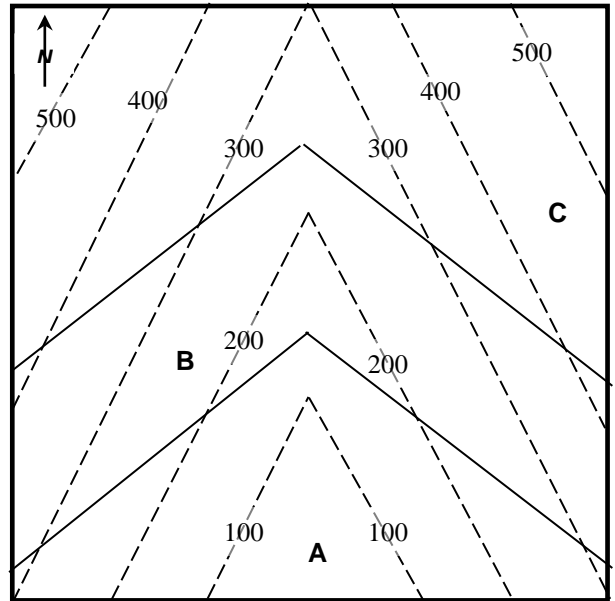


Figure: *OPH 2/11*

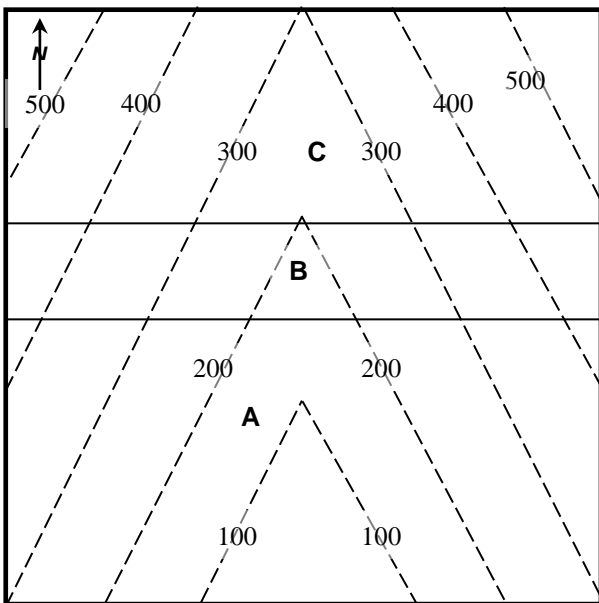


Figure: *OPH 3/11*

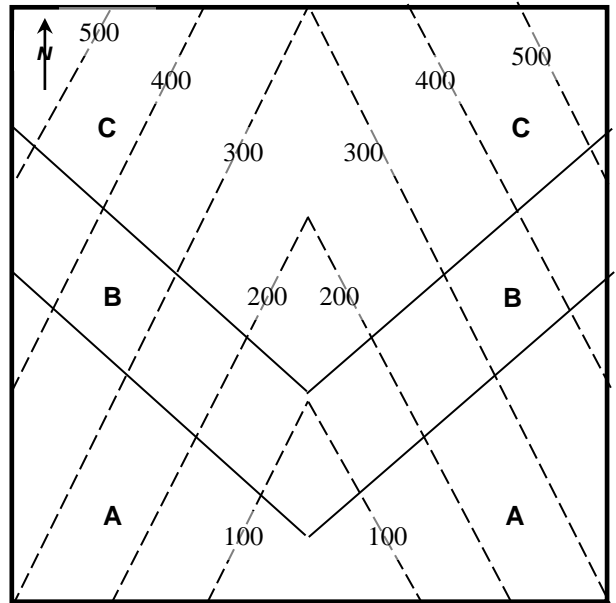


Figure: *OPH 4/11*

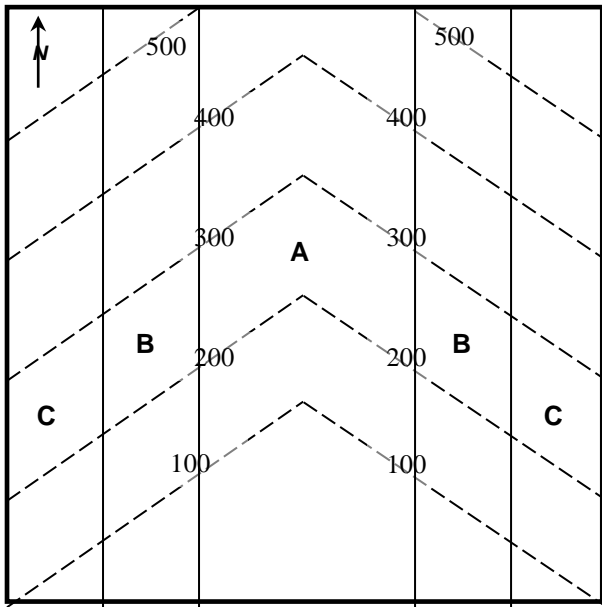


Figure : OPH 5/11

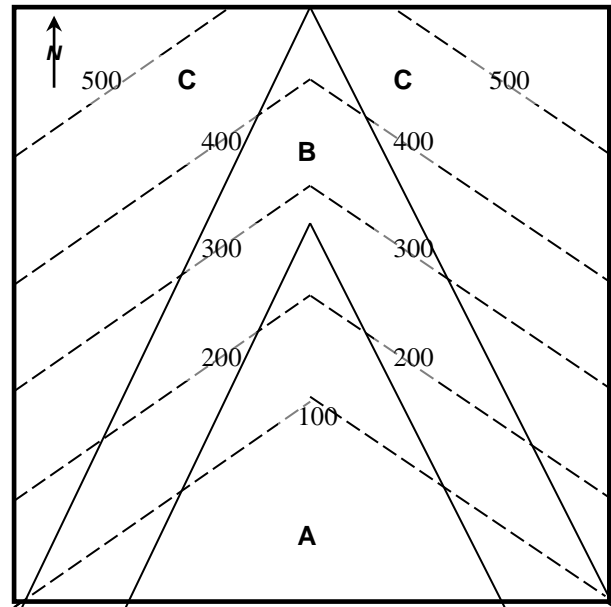


Figure : OPH 6/11